



IBI-ROOS report

EuroGOOS Annual meeting,

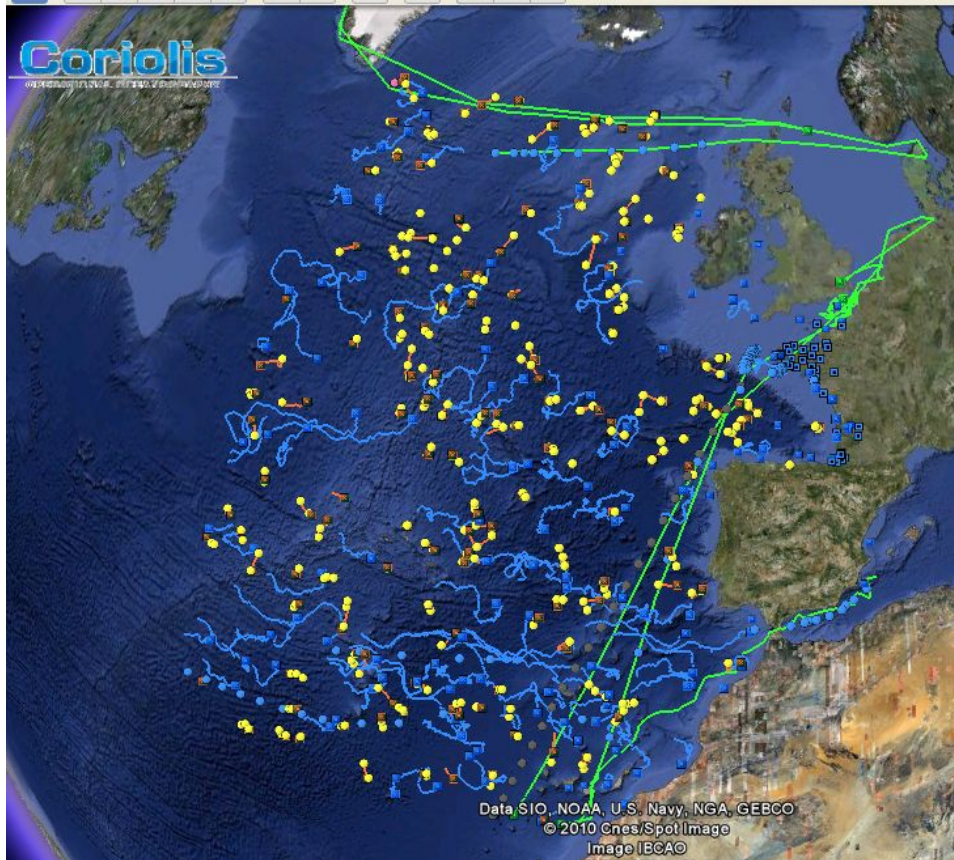
BELSPO, Brussels

21st to 23rd May 2014

Glenn Nolan, Sylvie Pouliquen, Sylvain Cailleau, Marc Sourisseau,
Rodrigo Fernandes, Marta de Alfonso, Kieran Lyons, Vicente Perez-Munuzuri

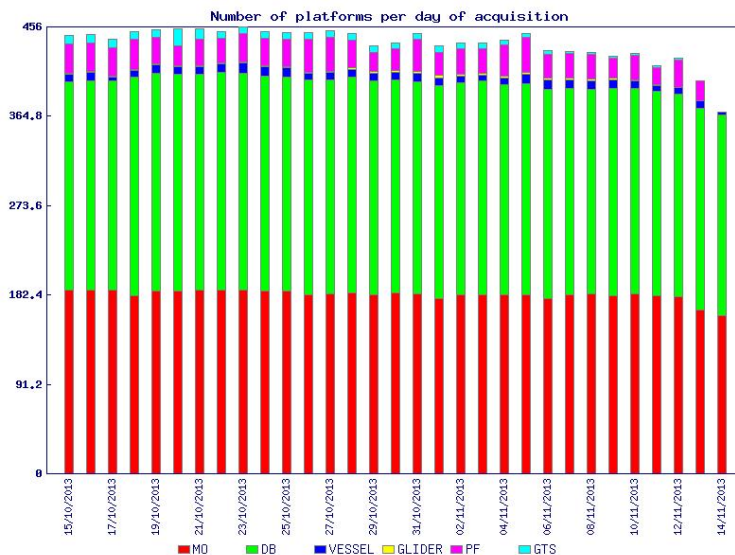
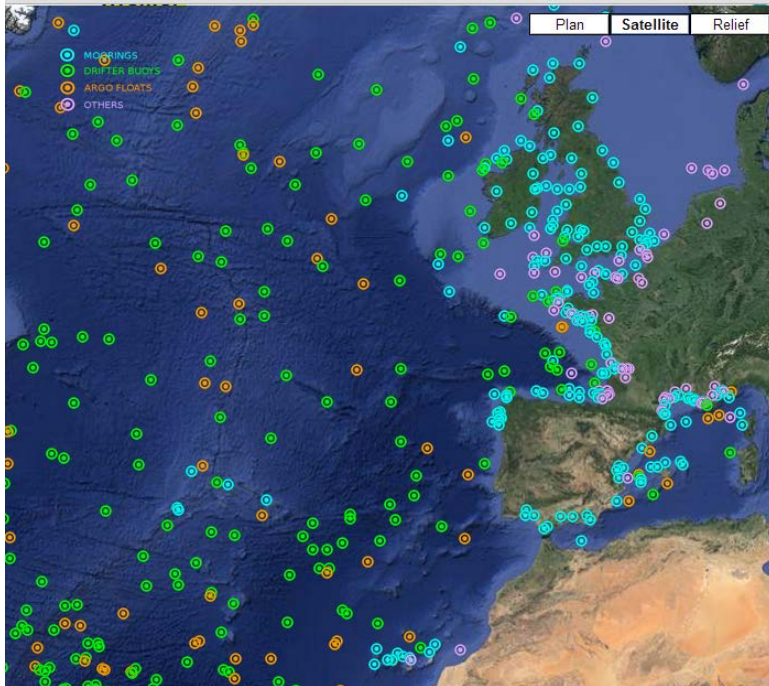
<http://www.ibi-roos.eu>

Real Time access to In situ observing systems in the IBI-ROOS region in 2009



- 2 partners cooperated for the provision of operational Oceanography services
- Mainly Drifters, Argo and some tide gauges/moorings were shared

Real Time access to In situ observing systems in the IBI-ROOS region in 2014



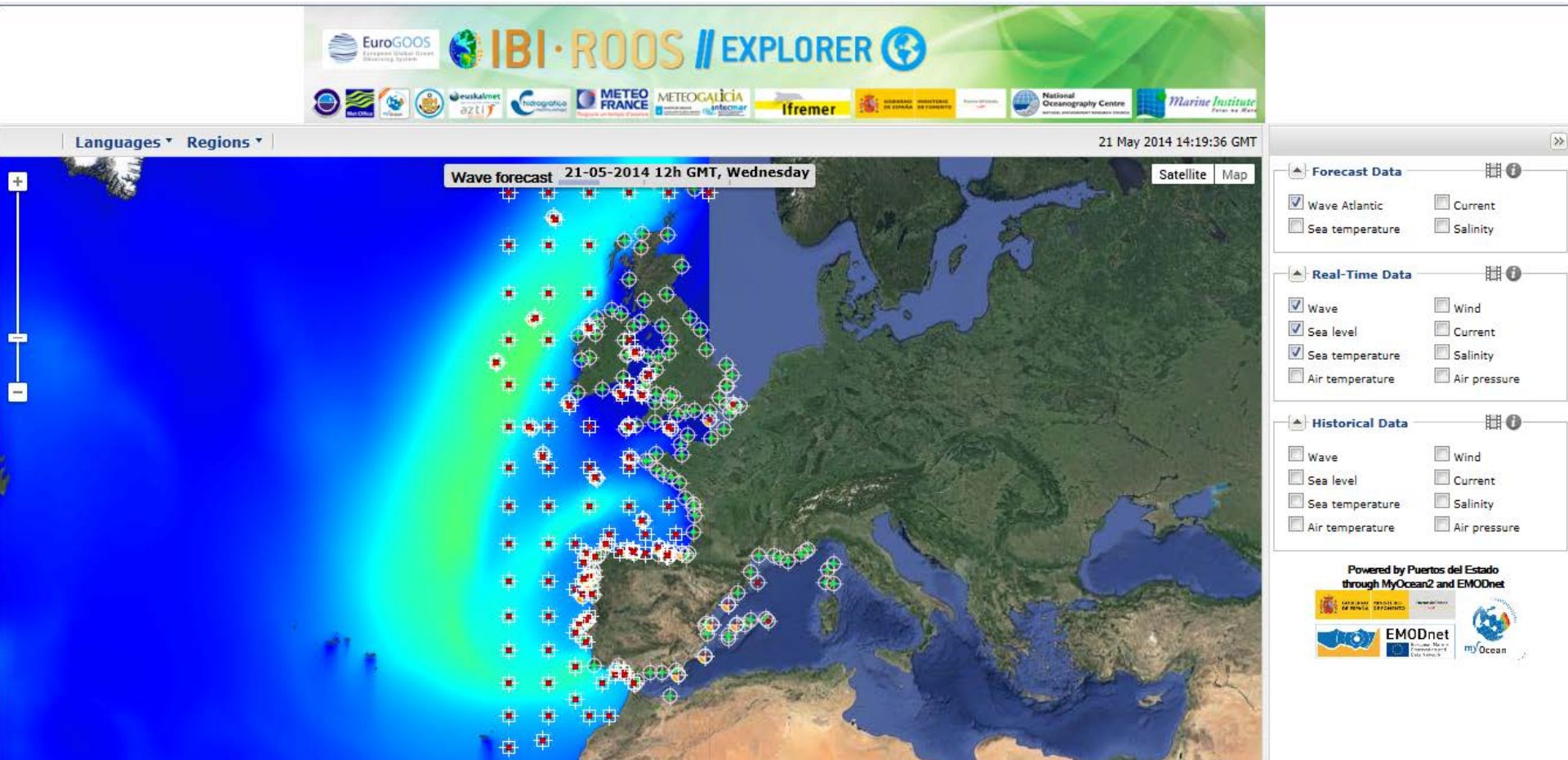
- 19 partners cooperate for the provision of operational Oceanography services
- A total number of 456 platforms is presently reporting to the IBI-ROOS region Real-time data delivery system
- Multiplatform real time observing system that is composed mainly by Drifters, Tidal gauges/Moorings and Argo observations.
- But also 9 Vessels delivering data in real time mode. 2 Ferryboxes, Gliders, Fishing vessels, 7 HF radar systems.

IBI-ROOS EXPLORER

Developed by Puertos del Estado

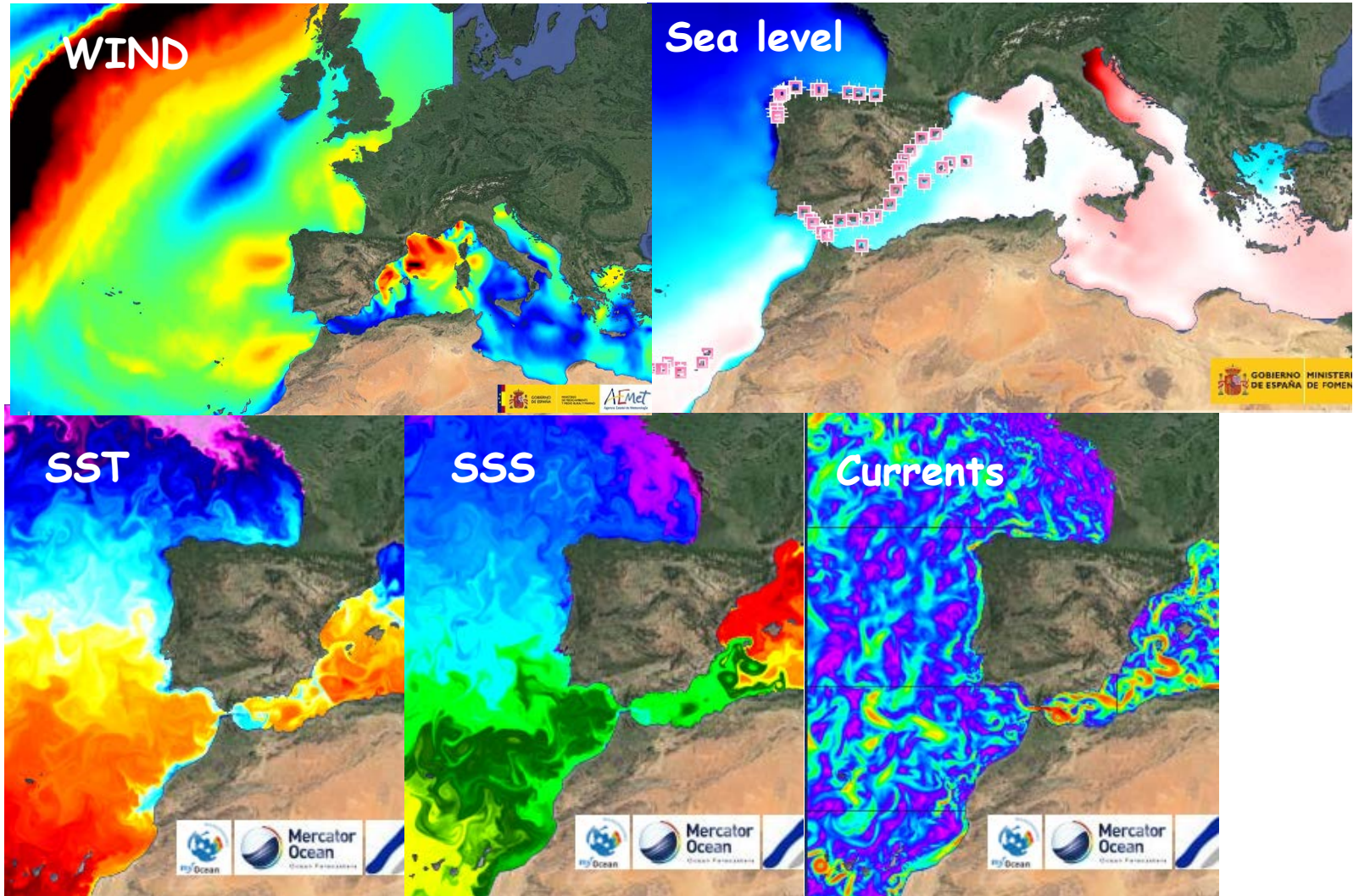


IBIROOS Explorer



<http://www.ibiexplorer.eu>

IBIROOS Explorer: Forecast



IBIROOS Explorer: Real time

The screenshot displays the IBIROOS Explorer interface. At the top, it shows the date and time: 15 Nov 2013 11:40:35 GMT. The main map is in satellite view, showing the Atlantic Ocean and the Iberian Peninsula. A popup window titled "Villano-Sisargas_buoy" is open, displaying station information and a table of variables. The table has columns for "Variables", "Table", and "Plot". The "Plot" column has a checked box for "Significant wave height (meter)".

Variables	Table	Plot
Significant wave height (meter)	<input type="checkbox"/>	<input checked="" type="checkbox"/>
Aver zero crossing wave period (second)	<input type="checkbox"/>	<input type="checkbox"/>
Wave direction rel. true north (degree)	<input type="checkbox"/>	<input type="checkbox"/>

Below the table, a smaller popup shows the buoy's name and a table of its latest data:

Villano-Sisargas_buoy	
Last Data Time	2013-11-15 10:00:00.0 GMT
Significant wave height (meter)	3.40
Aver zero crossing wave period (second)	6.88
Wave direction rel. true north (degree)	318

On the right side of the interface, there are three panels for data selection: "Forecast Data", "Real Time Data", and "Historical Data". The "Real Time Data" panel has "Waves" checked, and "Sea Level", "Air Pressure", "Air Temperature", and "Salinity" are unchecked. The "Historical Data" panel has "Waves", "Wind", and "Water Temperature" unchecked, while "Sea level", "Currents", and "Salinity" are also unchecked.

At the bottom, a plot titled "Boya de Villano-Sisargas, Altura signif. del oleaje (m), Hora GMT" shows the significant wave height in meters over time. The x-axis ranges from 9 Nov 2013 to 15 Nov. The y-axis ranges from 2 to 5 meters. The plot shows a fluctuating line of blue dots with a yellow trend line. The plot is titled "Boya de Villano-Sisargas, Altura signif. del oleaje (m), Hora GMT" and includes the "Puertos del Estado" logo.

IBI members

- AZTI/Spain
 - MeteoGALicia / Spain
 - Euskalmet-Basque
Météorological Agency /
Spain
 - I.E.O / Spain
 - Ifremer /France
 - Instituto Hidrografico
/Portugal
 - INTECMAR/ Spain
 - IPIMAR / Portugal
 - Irish Marine Institute/
Ireland
 - IST / Portugal
 - Mercator-Ocean/France
 - SHOM/ France
 - Météo-France/ France
 - CNRS France
 - Puertos Del Estado/Spain
 - NERC / UK
 - CETMEF/France
 - MetOffice / UK
 - Universidade dos Açores,
Portugal
- Potential new members:
Centre for Environment, Fisheries & Aquaculture Science
(CEFAS)/UK

Status of regional and coastal ocean analysis and forecasting oceanography systems including interfaces with Copernicus Marine Service.

- Many of the IBI partners have a well developed modeling and forecasting systems. Strong links exist between such systems and the Copernicus Marine Service through IBI partners that are part of the MFC in MyOcean (Puertos) and those who are developing demonstrators at local level within WP3 of MyOcean (IEO, IMI, IST, IFREMER).
- Tools have been developed through previous projects eg. EasyCo to co-present and display different institutes model outputs on a single portal. We intend to streamline this further in the coming year with the assistance of IST, Lisbon who coordinated this activity.

Applications and services (observations and models): status and new downstream services

- The IBI-ROOS community are very active in the development of new applications and services. Of particular note at the recent annual meeting in Santiago (March 3rd to 5th 2014) were:
- New services developed at Instituto Hidrografico, <http://www.hidrografico.pt/produtos.php>
- The ASIMUTH HAB forecast and bulletin <http://www.asimuth.eu/en-ie/Pages/default.aspx>

R&D activities from members

- IBI-ROOS have successfully completed several Interreg and EC funded research projects including:
 - **EasyCo**: focus on biogeochemical modeling <http://www.project-easy.info/>
 - **ARCOPOL**: focus on oil spill modeling and awareness <http://www.arcopol.eu/home.aspx>
 - **ASIMUTH**: developed to provide real time HAB bulletins to the Aquaculture industry <http://www.asimuth.eu/en-ie/Pages/default.aspx>
- There is considerable collaboration at national level including the **RAIA** observatory project in Spain <http://www.marnaraia.com/> , the **Lorea** project in SE Bay of Biscay and the **SmartBay project** in Ireland www.smartbay.ie .
- We also collaborated on submitting a downscaling project (MyCoast) which was not selected for Interreg funding but which we intend to resubmit.
- IBI-ROOS will work closely with JERICO as we prepare the follow on project to JERICO (JERICO-NEXT, submission in September 2014).
- We will have a number of R&D activities within the AtlantOS project (if successful).
- IBI-ROOS also plan to submit a COST action proposal on oceanographic products in cooperation with EPWG (Product working group) and EuroGOOS members.

Contribution to EuroGOOS WGs

- IBI-ROOS is active in **TPWG** (Technology Plan Working Group - Glenn Nolan) and **EPWG** (EuroGOOS Product Working Group) at present. IBI has also attended recent meetings of the **SAWG** (Science Advisory Working Group). IBI will propose new members for the various WGs of EuroGOOS in the coming months.

ROOS visibility and dissemination

- Puertos del Estado have put considerable effort (with MyOcean project support) into developing the IBI portal which can be viewed at <http://www.ibiexplorer.eu/>
- Individual member agencies of IBI-ROOS continually promote the activities of their organizations and the IBI-ROOS system

New IBI logo!!

